

# Revolutionary LED Technology

Innovation inside. Pure Spring City™ outside.

Equipped with **CROSSFIRE™** Optical and **CoolCast™** Heat Dissipation Technology



Franklin Square

Patent Pending



Spring City™

[www.springcity.com](http://www.springcity.com)  
610-948-4000  
[sales@springcity.com](mailto:sales@springcity.com)  
MADE IN AMERICA



Franklin Square



William and Mary



Columbia



Washington

## CROSSFIRE™ OPTICS

Our patent pending **CROSSFIRE™** Optics create the same warm blanket of light you're accustomed to which blends the LED light sources so that are not visible individually.

## CoolCast™ Heat Dissipation

Our patent pending **CoolCast™** heat dissipation allows for our fixture to maintain an extremely low junction temperature by dissipating the heat through our cast aluminum hood directly to the outside. This technology is available across our vast offering of luminaires.

## Operational Lifespan

The expected life of the LED components is well over 75,000 hours, which will outlast all other LED systems available. Using our CoolCast™ system, we maintain a 50° C junction temperature assuming an ambient temperature of 25° C.

## Daytime Appearance

Our design enables our foundry to cast the LED fixture line in a similar fashion as we have used over the past 100 years. The LED fixtures do not comprise the decorative appeal that your projects demand.

## Variable Color Temperature

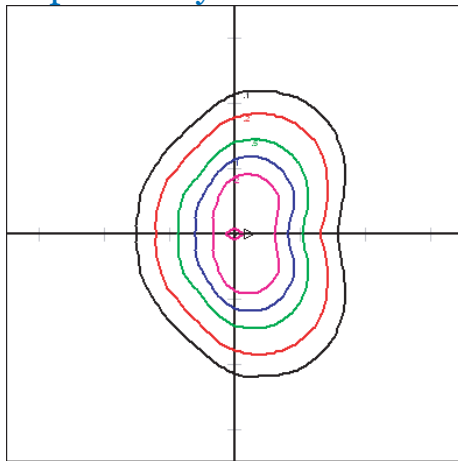
This LED system offers you to choose from 2700K through 6000K color temperature in order to better suit your needs. Increasing the color temperature will increase the overall luminaire efficacy!

## Made In America

From the LED light engine manufacture to our foundry, our LED fixtures are made in America!

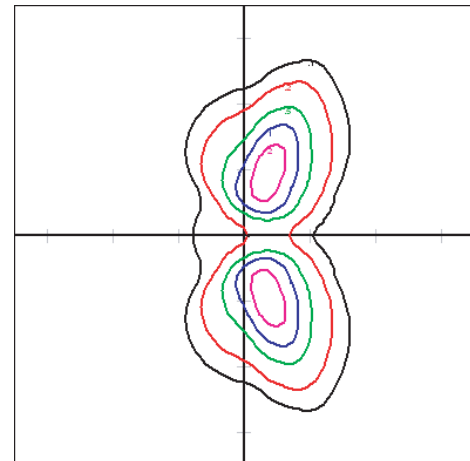
## Other Key Points

- Over 70% Street Side Lumens
- Currently Available Up to 132 Watts
- Independently Tested IES Files Available



### Metal Halide Template

185 Total System Watts (Metal Halide 150 Watts)  
 Light Loss Factor = 0.57  
 Total Lumens per Luminaire = 13500  
 Mounting Height = 12.00 Ft  
 Maximum Calculated Value = 4.35 FC  
 Scale: 5/16" = 20'



### LED Template

74 Total System Watts (6000K Color Temperature)  
 Light Loss Factor = 0.80  
 Total Lumens per Luminaire = 3659  
 Mounting Height = 12.00 Ft  
 Maximum Calculated Value = 3.54 FC  
 Scale: 5/16" = 20'